



**T.H.  
ELEMA**

# **Operating Manual Disc Brake**

DATE : 2008.09.01  
FILE NO : BTDA0001  
PAGE : 1 of 16

---

## **THRUSTOR DISC BRAKE**



**TB - TD TYPE**



**T.H.  
T.H. ELEMA ENG. CO., LTD.  
TEL. +82-31-498-9270  
FAX. +82-31-498-9275**

---



!



( 100 ~ 150 )

/  
PAD  
/

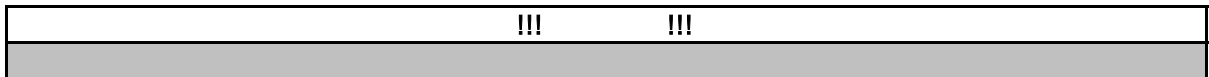
L/S , ( WEDGE )  
( OPTION )

가

/

, 가 :

가



가

PAD

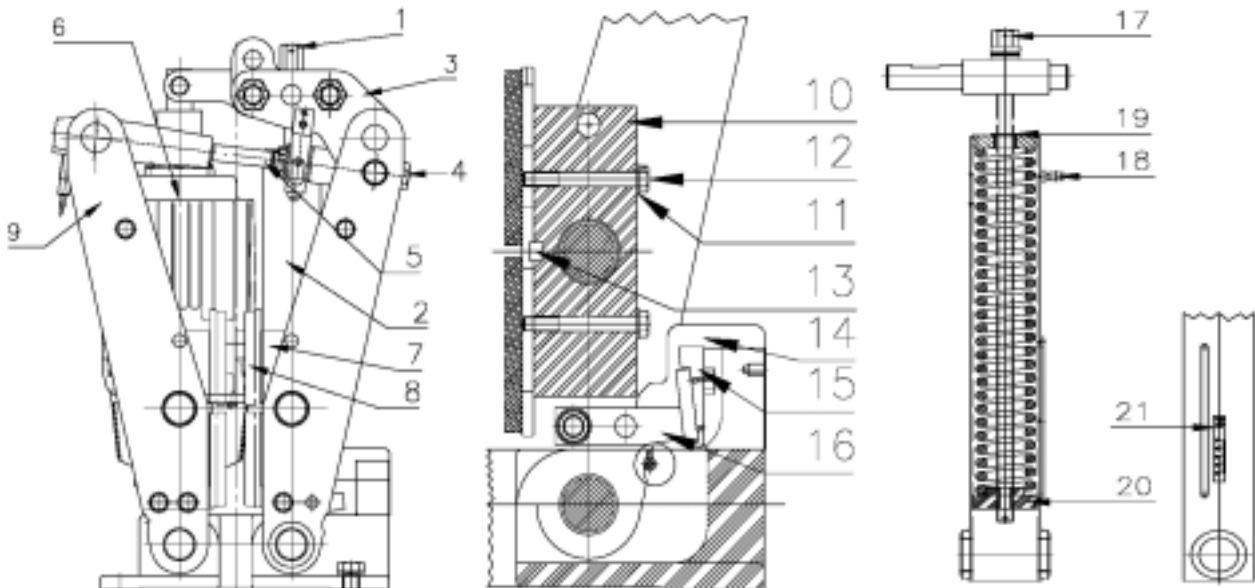
(WEDGE)



1.

		<b>THRUSTOR</b>		<b>BRAKE SPRING</b>
	POST가 SHOE	THRUSTOR	SHOE	PAD가 DISC
		THRUSTOR	MOTOR가	
POST	SHOE	LEVER	<b>BRAKE SPRING</b>	
				TIE ROD
				("B" TYPE)

2.

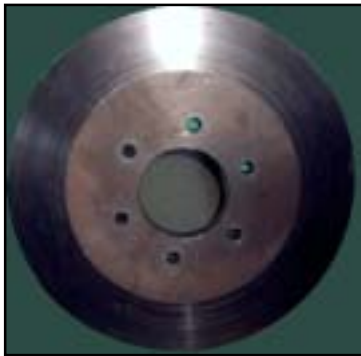


1	LOCK NUT	8	PAD	15	WEDGE
2	SPRING CASE	9	POST	16	SHACKLE
3	LINK	10	SHOE	17	LOCK NUT
4	LOCK NUT	11	WASHER	18	HANDLE SUPPORT
5	ADJUST ROD	12	BOLT	19	FLANGE BUSHING
6	THRUSTOR	13	SHOE KEY	20	SPRING RETAINER
7	SHOE	14	CASE	21	



3.1

가  
PAD



(CLEANNESS)

가?

가 .



(UNCLEANNESS)

3.2



1. BOLT



2. COVER



3. PUSH POST



4. WEDGE

COVER(14)

POST(09) 가

WEDGE(15)

5mm

( 5)



3.3



( 1 )

가

( NUT(1) TORQUE 30%



( 2 )

HOLE .( 1 )  
)  
( 2 )

3.4



( 3 )

PAD가  
ADJUSTOR(23) NUT(4)  
( 4 )  
ADJUSTOR PIN(24)  
ADJUSTOR(23)



( 4 )

NUT(4) .( 3 )  
ADJUSTOR(23)  
ADJUSTOR(23)가

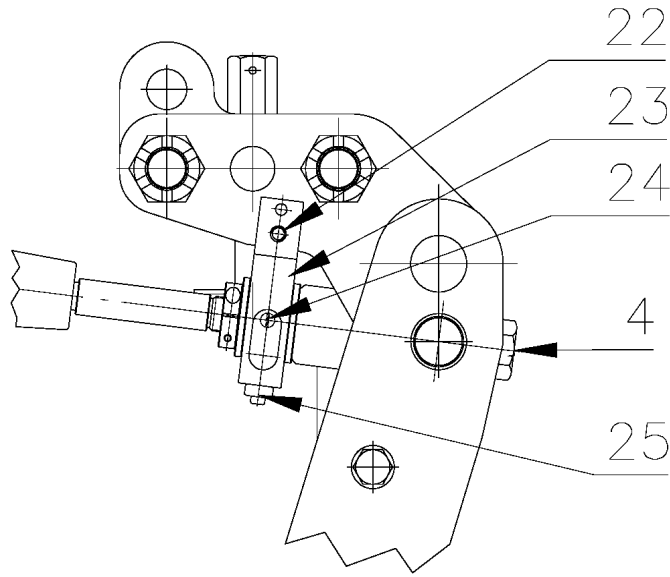
ADJUSTOR PIN(24) ADJUSTOR(23) HOLE  
ADJUSTOR(23) (22)  
(22)



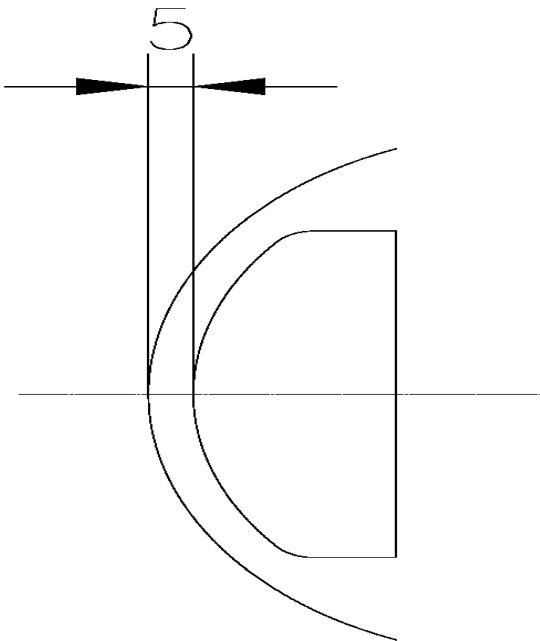
3.5  
SPRING

TORQUE

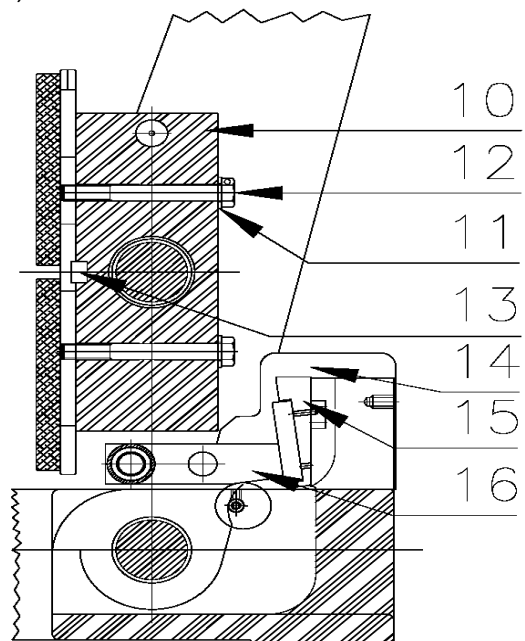
3.6



( 4 )



( 5 )



( 6 )

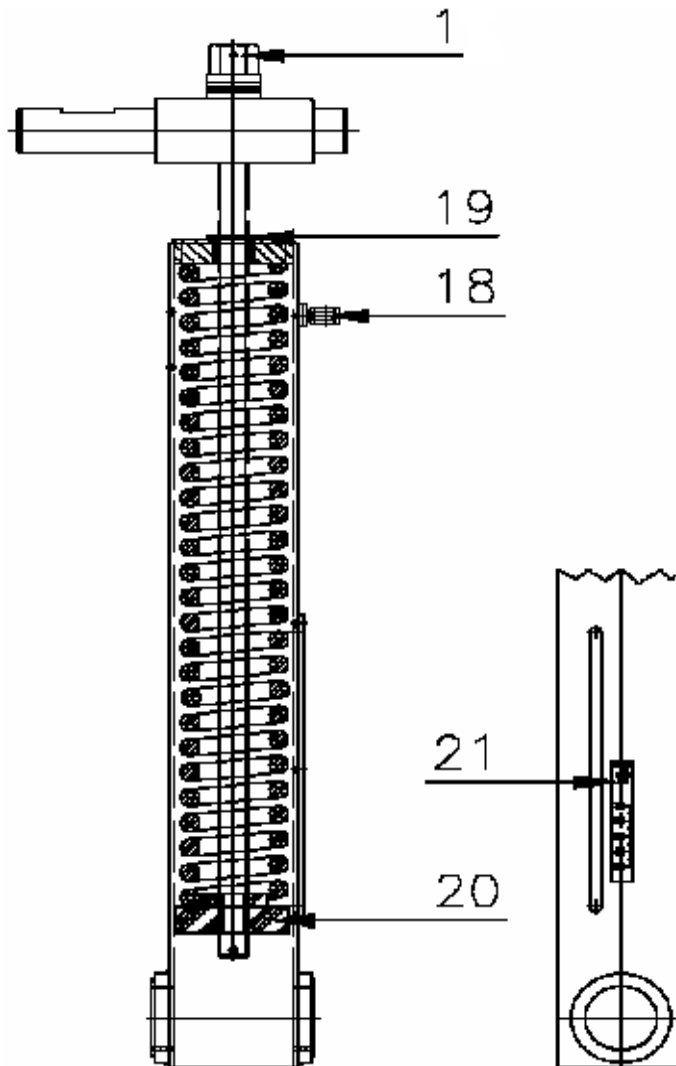


### 3.7 TORQUE ( 7 )

NUT(1)

TORQUE SPRING RETAINER(20)  
TORQUE 가

(21)



(7)  
TORQUE

TORQUE	TORQUE 50% .
--------	--------------



### 3.8

가 SETTING 가 !

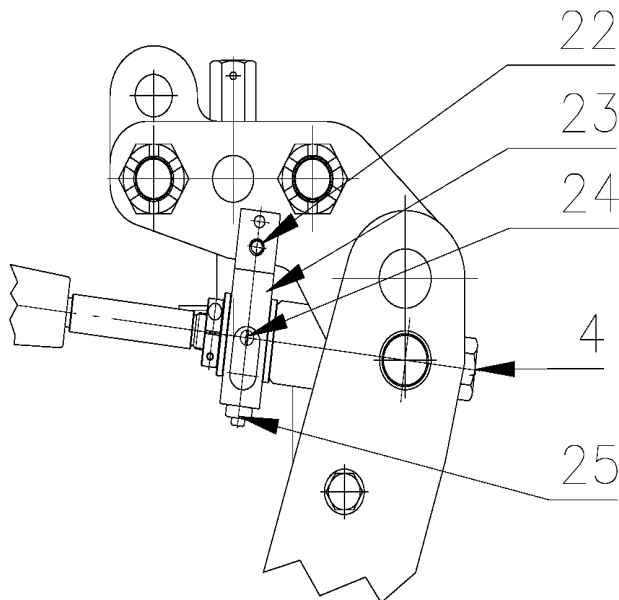
ADJUSTOR(23)

NUT(4)

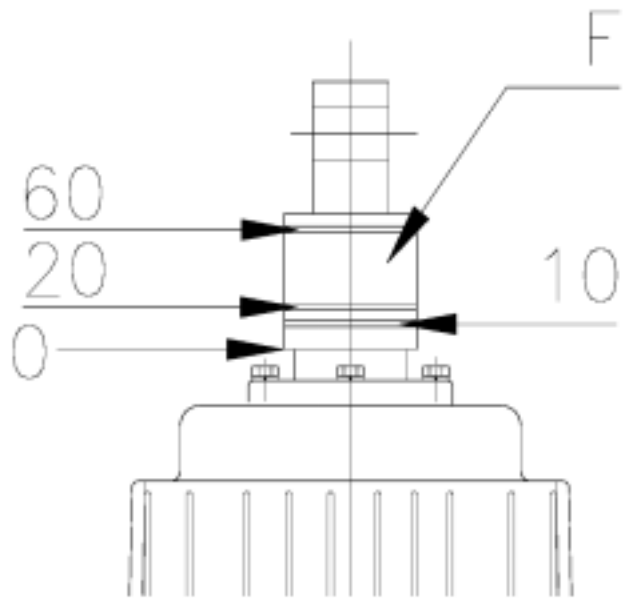
( 8)  
"10" 10mm .(가 (F)  
가 ) 가 :  
10mm 가  
2 20 TD BRAKE 가 .  
3 60 , 가

ADJUSTOR(23)

		!!!	!!!		
10				가	(F)
가			!		



( 4)



( 8)





3.9 , GAP ( 6, 6A)

AIR GAP ( WEDGE 15 )  
( WEDGE 15 )  
PAD GAP 가 . ( 1 )



( 1 )



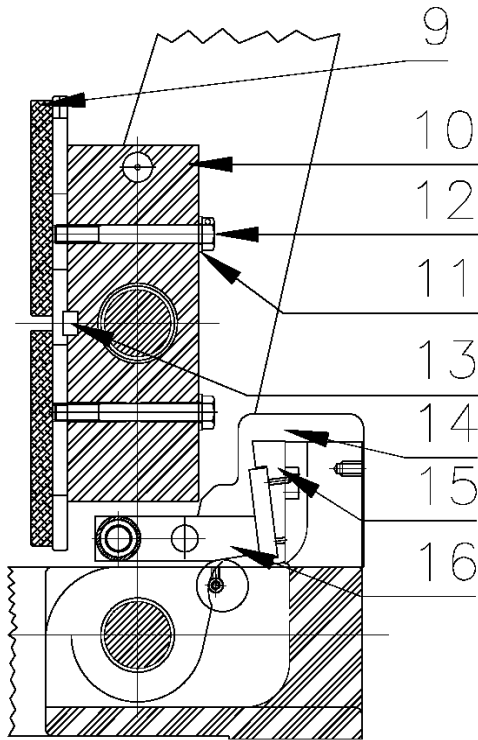
( 2 )

( WEDGE 15 )  
( 1.0mm 1.5mm )  
" (WEDGE 15)  
(15.1)  
(15.1) (GAP "S"=0) PAD 가  
1/4 .( 6-A )

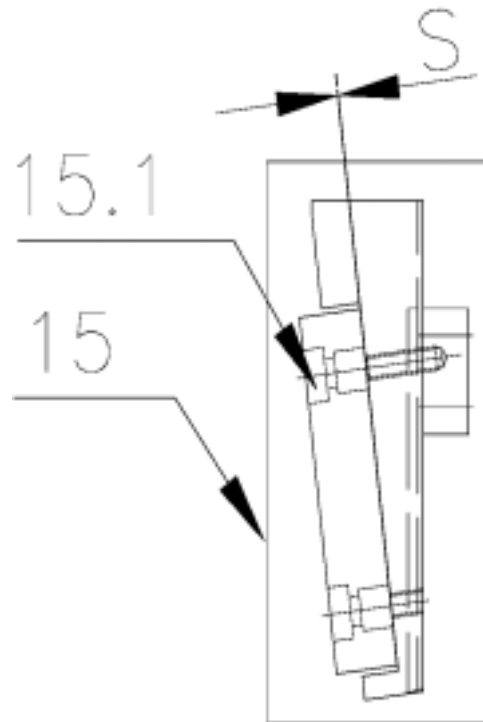
PAD AIR GAP	2	(15.1)
PAD AIR GAP " "	2	(15.1)



( 3 )



( 6 )



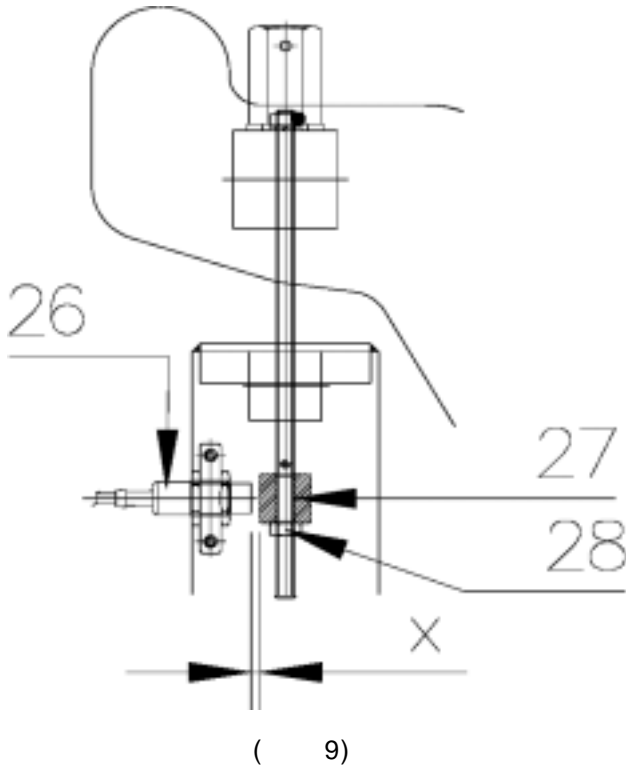
( 6-A WEDGE )

PAD

AIR GAP

가?

3.9



### 4.1

(26)  
.GAP X 4mm, 5mm

NUT(28)  
(27) 가

가

가

NUT(28) (27)

### 4.2

가 10mm 가?

3.8 PAD 가?

3.9 TORQUE 가?

3.7 ADJUSTOR(23) 가?

ADJUSTOR PIN (24) ADJUSTOR(23) 가?

ADJUSTOR PIN (24) ADJUSTOR(6) 가?

(4)





3.7~4.0		
PAD	PAD	PAD

!!!	!!!
25~30	(3.8 )

### 5.1

- a) 1/2 , 45 !
- b) 1/2 10~15
- c)
- d)
- e)
- f) b),c)

### 5.2

- a) 50% , 45 !
- b) 5 1/2
- c) 75%
- d) 5.2 b)
- e) 100%
- f) 5

	30m/s	75m/s
	200	250
	5 sec	15 sec

가

:	:	가	가?
:	:	TORQUE	(3.7 )



## 6.1 100~150

( )

## 6.2 PAD

TORQUE (3.7 )  
SHOE (3.9 )  
(3.8 )

## 6.3

가 , (4) .(3.8) 4  
:  
!  
(3.8 )

!!!	!!!
"10" 가	가 가

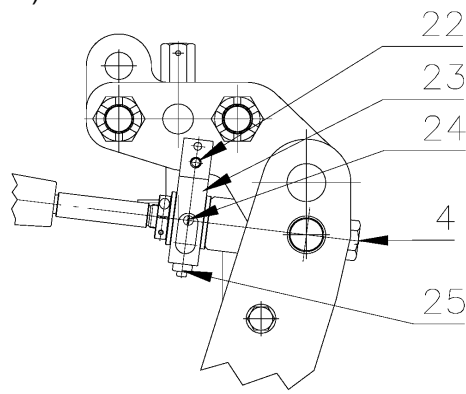
## 6.4

## 6.5 6

3.7~4.0

:( 4)

ADJUSTOR(23)  
ADJUSTOR PIN(24)



( 4)



## 6.6

1mm  
1.5mm

가

## 6.6

가

100~150  
1

.(02 )

a)

3~4

b)

(2

가

)

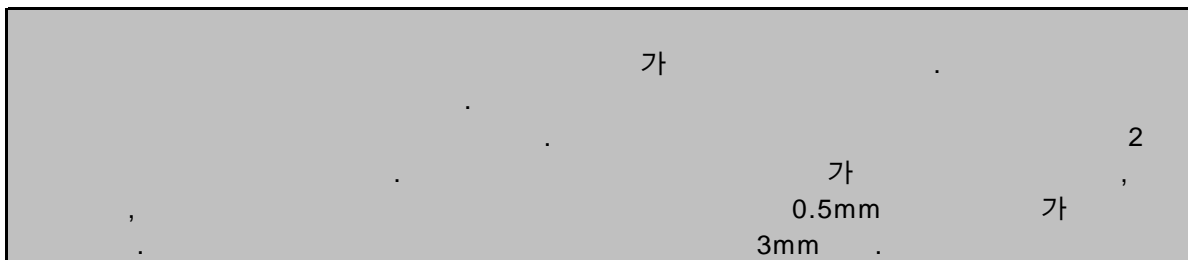
30cm

2

5.0

## 6.6

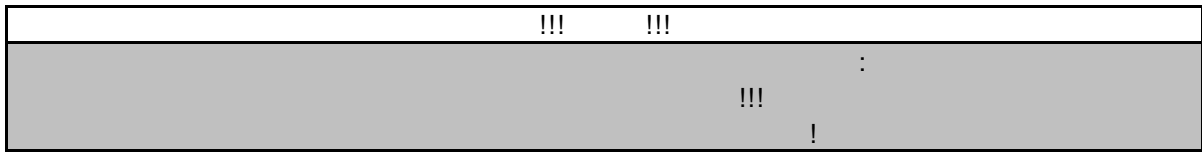
c)



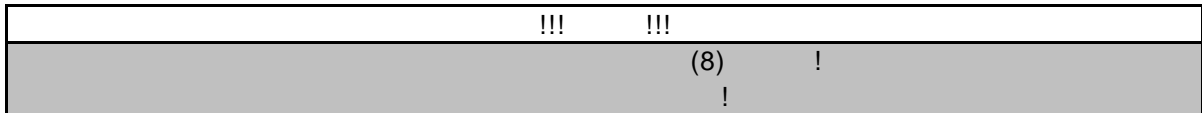


4.7 :  
:3mm

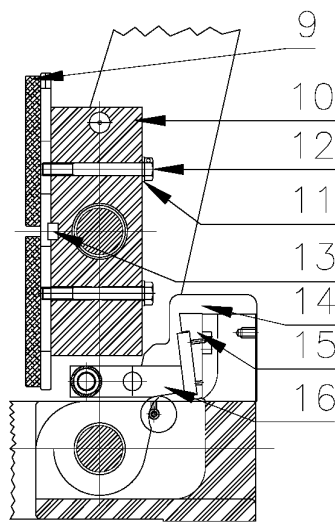
4.8 PAD ( .)



(WEDGE 15) (3.0 )  
(4) (3.2 )



2 (12) . (8) ,  
KEY(13) .  
가 가 ( )  
KEY(13) (12) .  
(11) !  
3.7~4.0  
5.0



( 6)



1	2		
2	2		
3	1	(WEDGE)	
4	1	ADJUSTOR	
5	1		
6	1		
7	1		
8	3		
9	2		
10	1		
11	1		
12	1		1
13	1		
14	1	SHACKLE	
15	1		
16	1		
17	1		

